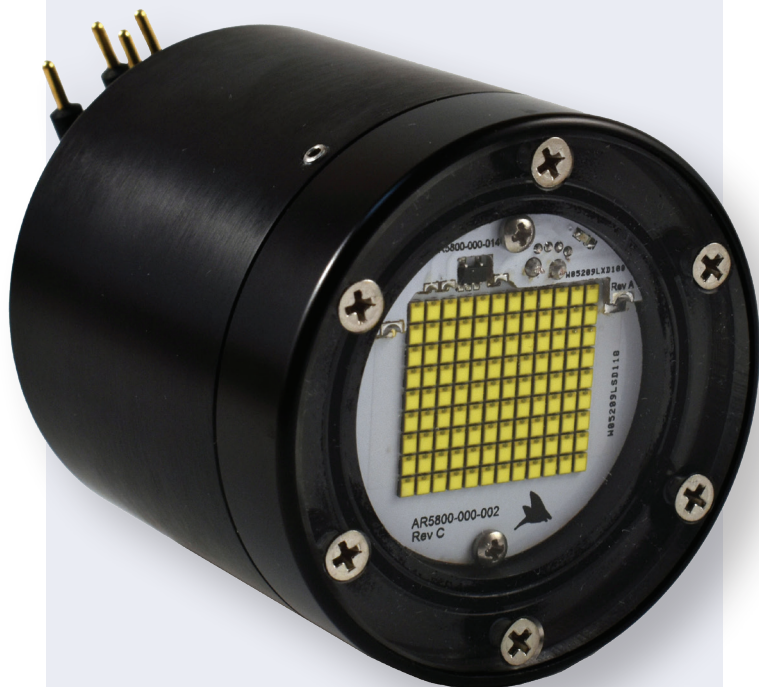


DragonFish Mini Strobe

LIGHTING
SERIES



Patented driver delivers increased lumen output with less power draw in the smallest package.

U.S. PATENTS
#10054287 & #10704766

Compact LED strobe

Features

- ▶ High-output, 30,000-lumen strobe with patented driver technology
- ▶ Extremely compact package with integral driver electronics
- ▶ 300-m-rated
- ▶ Wide-flood or focused-beam option
- ▶ Ideal for HOV/ROV/AUV digital still photography or wherever a high-output, compact strobe is needed
- ▶ Simple trigger-controlled pulse length
- ▶ Fast repetition rate
- ▶ Optional independent secondary quench line
- ▶ Customizable color temperature, pulse intensity, rep rate and max pulse duration
- ▶ Durable, hard-anodized 6061 aluminum housing
- ▶ Wide input supply

Technical specifications on reverse.

Arctic Rays specializes in deep-sea lighting and imaging systems and other custom solutions specifically for use on AUVs, ROVs, manned submersibles and other offshore and underwater structures.

Think deep.

arcticrays.com • 1.321.610.4635



ARCTIC RAYS
SUBSEA TECHNOLOGIES

DragonFish Mini Strobe

Technical Specifications

PARAMETER	SPECIFICATION
Model Number	AR107
OPTICAL	
Operating Mode	Pulsed strobe
Color channels	One
Output	30,000 Lm @ 5,700K
Color Temperature	2,700K 3,000K 3,500K 4,000K 5,700K standard 6,500K
Color Rendering Index	70 min. standard; optional 80 min., 90 min.
Beam Angle (FWHM)	100° standard; 65° optional
ELECTRICAL	
Voltage	9–32 VDC standard; other voltage ranges optional
Power	16 W pulsed max
Max Input Current	650 mA @ 24V, during recharge
Pulse Duration	0.1–5 ms standard
Pulse Rep Rate	2 Hz standard; 10 Hz optional
Efficacy	1,875 Lm/W pulsed
INTERFACE	
Connector	Subconn MCBH4M or Impulse LPMBH4M
Control	Logic trigger, 5V TTL, active-low
MECHANICAL	
Weight	350 g in air; 175 g in seawater
Materials	6061-T6 aluminum housing (AHC black); acrylic window
ENVIRONMENTAL	
Depth Rating	300 m (984 ft)
Temperatures	-10°C to 40°C operating; -25°C to 85°C storage

