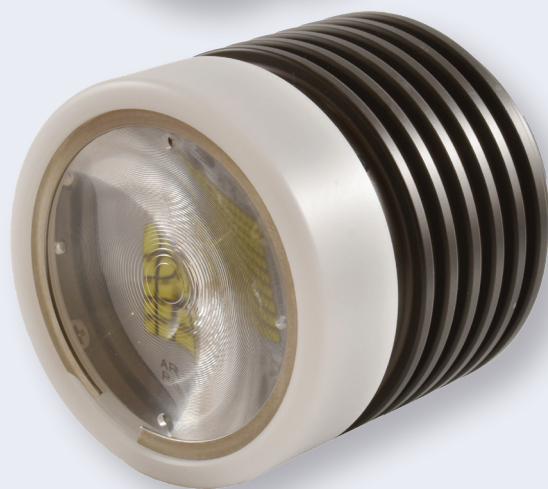
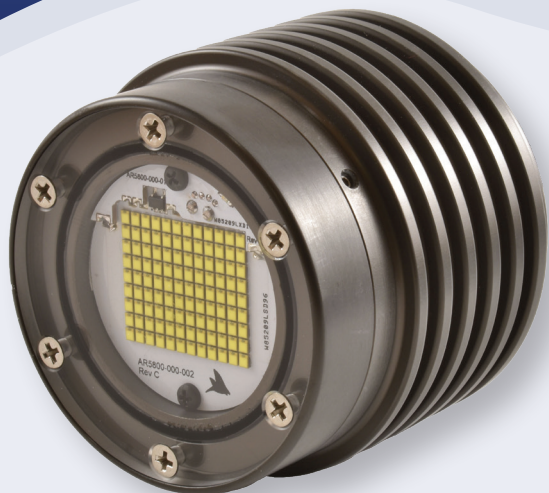


DragonFish

Air

LIGHTING
SERIES



Patented driver delivers increased lumen output with less power draw in the smallest package.

U.S. PATENTS
#10054287 & #10704766

Compact LED strobe

Features

- ▶ High-output, 30,000-lumen, strobe with patented driver technology
- ▶ Designed to operate continuously in air
- ▶ Extremely compact package with integral driver electronics
- ▶ IP68-rated
- ▶ Simple trigger-controlled pulse length
- ▶ Fast repetition rate
- ▶ Optional independent secondary quench line
- ▶ Customizable color temperature, pulse intensity, rep rate and max pulse duration
- ▶ Durable, hard-anodized 6061 aluminum housing
- ▶ Wide input supply
- ▶ Optional narrow-beam Fresnel lens

Technical specifications on reverse.

Arctic Rays specializes in deep-sea lighting and imaging systems and other custom solutions specifically for use on AUVs, ROVs, manned submersibles and other offshore and underwater structures.

Think deep.
arcticrays.com • 1.321.610.4635



ARCTIC RAYS
SUBSEA TECHNOLOGIES

DragonFish Air

Technical Specifications

PARAMETER	SPECIFICATION
Model Number	AR107
OPTICAL	
Output Lumens	30,000 Lm
Color Temperature	2,700K 3,000K 3,500K 4,000K 5,700K 6,500K
Color Rendering Index	70 min. standard; optional 80 min., 90 min.
Beam Angle (FWHM)	100°
Beam Angle with Optional Lens	65°
ELECTRICAL	
Input Voltage	9–32 VDC
Power	16 W pulsed
Max Input Current	550 mA @ 28VDC
Strobe Quench Signal Input	5V TTL (active low)
Max Pulse Duration	100 μ s – 5 ms
Max Pulse Rep Rate	10 Hz – 2 Hz
Efficacy	1,875 Lm/W pulsed
Connector	4 conductor 22 AWG pigtail (2 m)
Std. Connector Pinout	1: GND 2: +V 3: Strobe (5V TTL, active low) 4: Quench (5V TTL, active low) (opt.)
ENVIRONMENTAL	
Depth Rating	IP68
Temperatures	-10°C to 40°C operating; -25°C to 85°C storage
MECHANICAL	
Size	62 mm L x 67 mm dia.
Weight	335 g
Window Material	Acrylic
Housing Material	Aluminum, 6061-T6, AHC black

