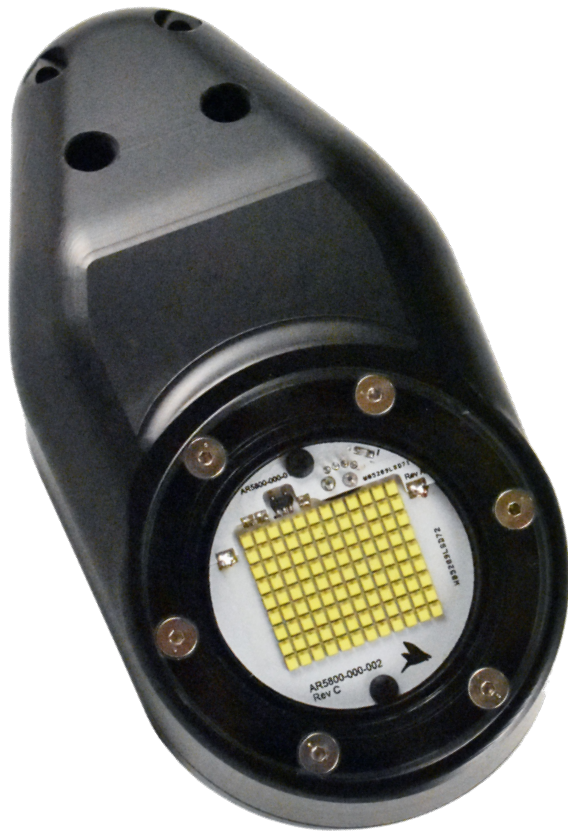


# Remora Torch

## Compact LED Light



### FEATURES

- ▶ Optimized for AUV continuous-imaging applications
- ▶ High-output 10,000 lumen continuous, dimmable torch light for professional imaging applications.
- ▶ Designed for OceanServer Iver3 AUVs; can be customized for other vehicles
- ▶ Extremely compact package with integral power-efficient driver electronics
- ▶ 300m depth rating
- ▶ Wide-angle, even light distribution
- ▶ User-settable PWM dimming frequency allows flicker-free operation for various video frame rates
- ▶ Durable anodized aluminum housing
- ▶ Wide input voltage supply
- ▶ Integral Iver penetrator plug or optional bulkhead connector
- ▶ Pulse intensity, rep rate, max pulse duration and color temperature can be customized

*Technical specifications on reverse*

# Technical Specs

## Remora Torch

PARAMETER	REMORA TORCH
Model Number	ARI06-T
Depth Rating	300m (985ft.)
Input Voltage	12–38VDC
Max Current Draw	105W
Output Lumens @ 5,700K	10,000 lumens
Color Temperature (CCT)	2,700K–6,500K
Color Rendering Index (CRI)	70 min. (optional 80 min.)
Beam Angle (FWHM)	100°
Window Material	Cast Acrylic
Housing Material	Aluminum, 6061-T6, AHC black
Size	135mm L x 66.5mm W x 34mm H
Weight	390g (in air); 200g (in saltwater)
Operating Temperature	-10°C to 40°C
Wiring Output	1: (BRN) GND 2: (RED) +V 3: (YEL) RS232 RX (from host) or RS485 (A) or 5V ref 4: (BLU) RS232 TX or RS485 (B) or Analog Dim (0–10VDC)

